

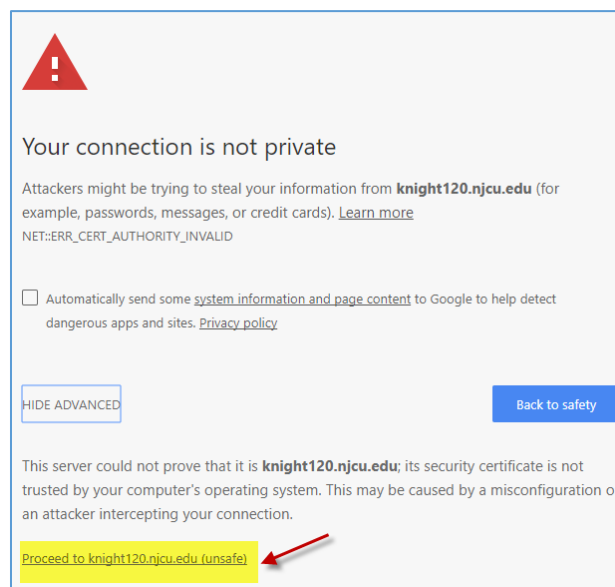
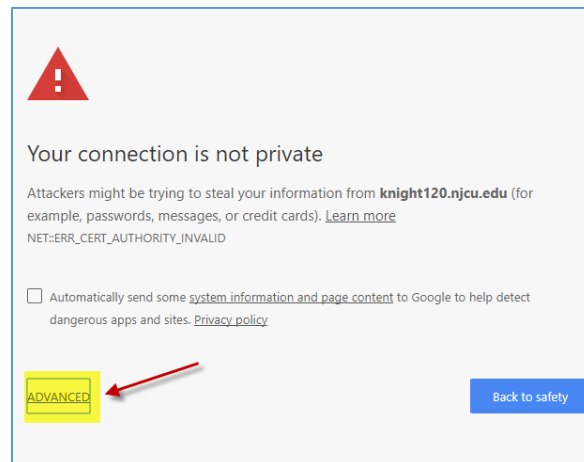
## Certificate error issue resolution in different browsers:

Please follow below directions to bypass certificate error received while running reports within GothicNet.

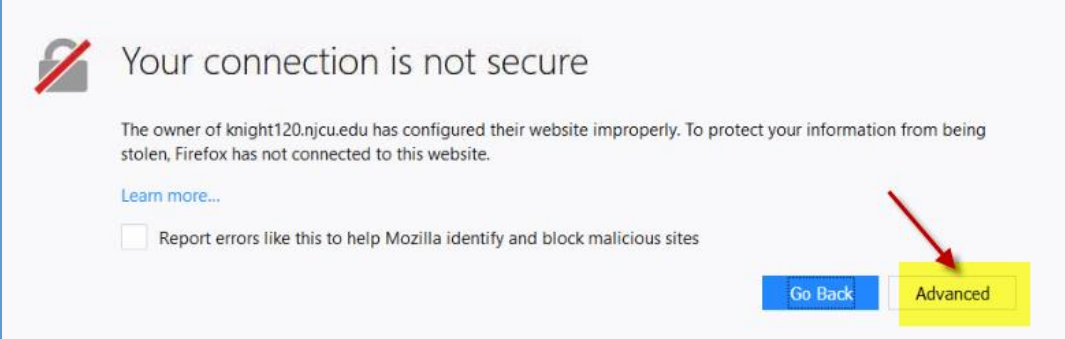
**Please Note:** Certificate error issue is currently being worked on and will be resolved as soon as possible.


- [Google Chrome](#)
- [Firefox](#)
- [Microsoft Edge](#)
- [Internet Explorer](#)

### Google Chrome:



## Firefox Browser:



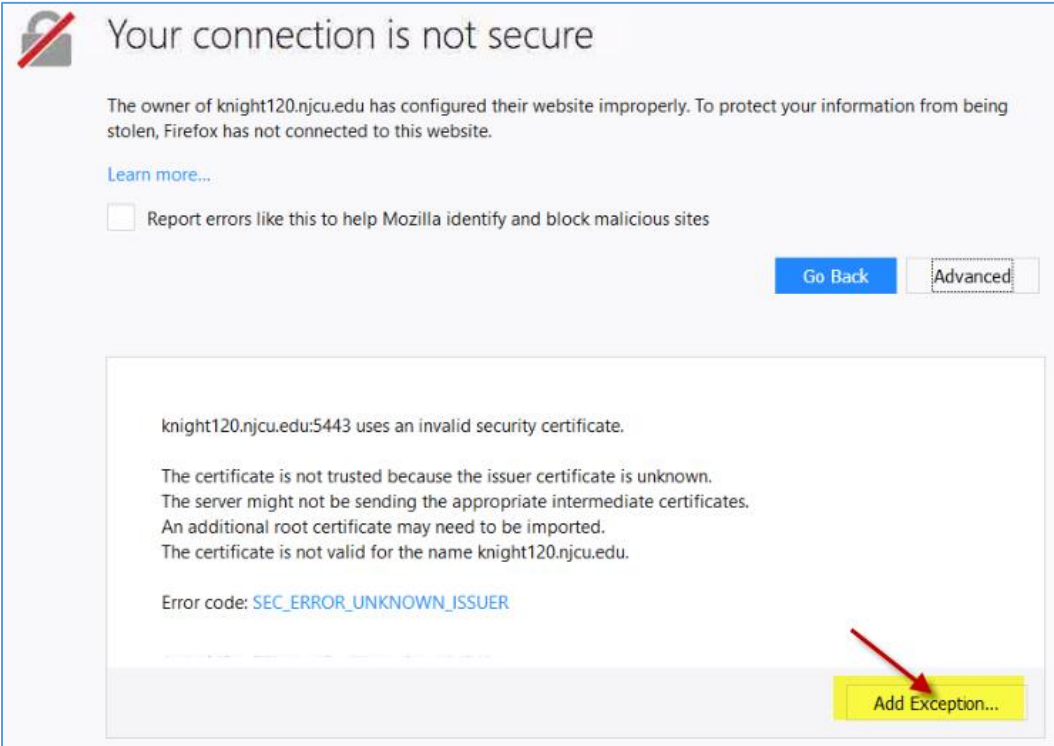
 **Your connection is not secure**


The owner of knight120.njcu.edu has configured their website improperly. To protect your information from being stolen, Firefox has not connected to this website.

[Learn more...](#)

Report errors like this to help Mozilla identify and block malicious sites

[Go Back](#) [Advanced](#)



 **Your connection is not secure**

The owner of knight120.njcu.edu has configured their website improperly. To protect your information from being stolen, Firefox has not connected to this website.

[Learn more...](#)

Report errors like this to help Mozilla identify and block malicious sites

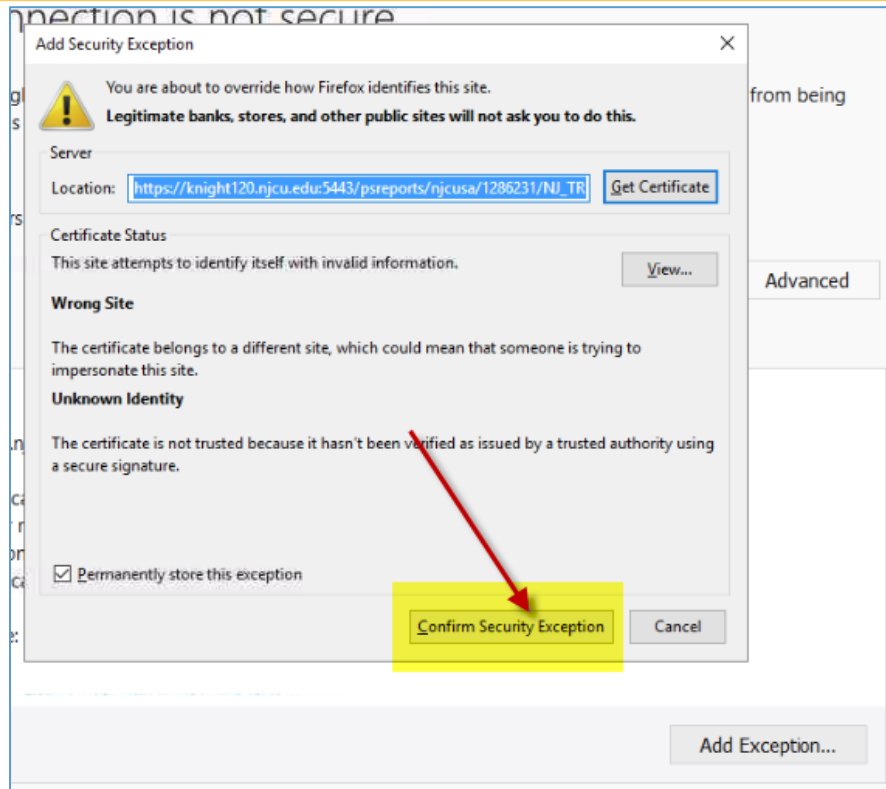
[Go Back](#) [Advanced](#)

knight120.njcu.edu:5443 uses an invalid security certificate.

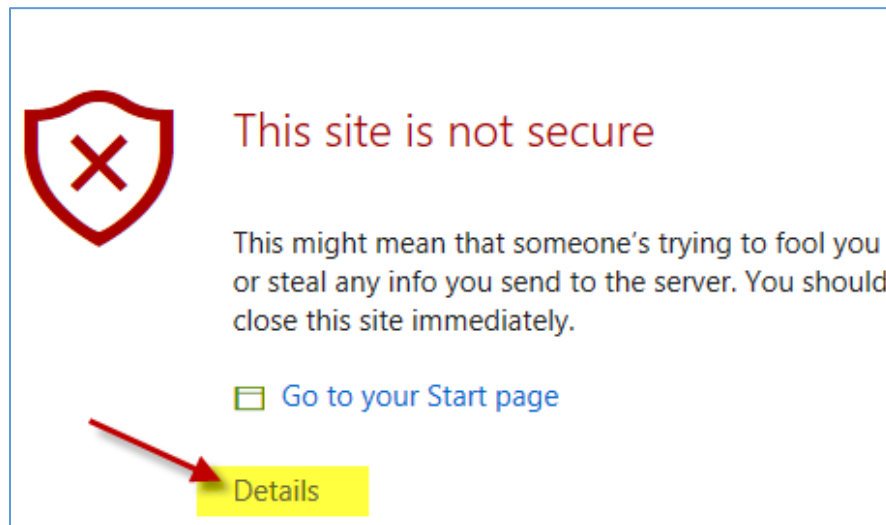
The certificate is not trusted because the issuer certificate is unknown.  
The server might not be sending the appropriate intermediate certificates.  
An additional root certificate may need to be imported.  
The certificate is not valid for the name knight120.njcu.edu.


Error code: [SEC\\_ERROR\\_UNKNOWN\\_ISSUER](#)

[Add Exception...](#)



### Microsoft Edge Browser:





### This site is not secure

This might mean that someone's trying to fool you or steal any info you send to the server. You should close this site immediately.

[Go to your Start page](#)


Details

Your PC doesn't trust this website's security certificate.  
The hostname in the website's security certificate differs from the website you are trying to visit.

Error Code: DLG\_FLAGS\_INVALID\_CA  
DLG\_FLAGS\_SEC\_CERT\_CN\_INVALID

[Go on to the webpage](#) (Not recommended)

## Internet Explorer:



### There is a problem with this website's security certificate.

The security certificate presented by this website was issued for a different website's address.  
The security certificate presented by this website was not issued by a trusted certificate authority.

Security certificate problems may indicate an attempt to fool you or intercept any data you send to the server.

**We recommend that you close this webpage and do not continue to this website.**

[Click here to close this webpage.](#)

[Continue to this website \(not recommended\).](#)

[More information](#)

### This site is not secure

This might mean that someone's trying to fool you or steal any info you send to the server. You should close this site immediately.

[Close this tab](#)

[More information](#)

## This site is not secure

This might mean that someone's trying to fool you or steal any info you send to the server. You should close this site immediately.

 [Close this tab](#)

 [More information](#)

**Your PC doesn't trust this website's security certificate.**  
**The hostname in the website's security certificate differs from the website you are trying to visit.**

Error Code: DLG\_FLAGS\_INVALID\_CA  
DLG\_FLAGS\_SEC\_CERT\_CN\_INVALID

 [Go on to the webpage \(not recommended\)](#)

